

# THURSDAY

## Food Pantries

### FAMILY RESOURCE CENTER- PACER PANTRY

74 W. William St., Delaware  
740-833-1619

**CURBSIDE PICKUP-CALL A FEW  
HOURS IN ADVANCE**

### LSS FOOD PANTRY

Place your order and schedule  
pick up online at  
lssfoodpantries.org or call the  
Help Desk at 1-877-LSS-MEAL.  
Questions, visit:  
www.lssnetworkofhope.org/  
foodpantries/

### M.A.S.H. PANTRY FOR VETERANS

222 East William Street,  
Delaware  
614-522-1555

**6-8PM**

### OPEN TABLE FOOD PANTRY

2393 Peachblow Road, Lewis  
Center  
740-548-7718

Serving Lewis Center, Powell, Polaris  
**FOURTH THURSDAY**  
**7-8:30PM**

### THE SALVATION ARMY

340 Lake Street, Delaware  
740-369-5301  
**10AM-NOON**  
**1PM-3PM**

## FREE OR REDUCED Community Meals

### ANDREWS HOUSE

39 West Winter Street, Delaware  
740-369-4520  
**THIRD THURSDAY**  
**5:30-6:30PM**

### WINTER STREET DINNER FIRST PRESBYTERIAN CHURCH

73 West Winter Street, Delaware  
740-363-1205  
**FOURTH THURSDAY**  
**6-7PM**

## 55+ MEALS -

SourcePoint congregate  
dining areas are  
**CURRENTLY CLOSED.**  
Please call 740-203-2432 for  
additional information.

### ASHLEY-WHITE LILY CHAPEL 11:30AM-1PM

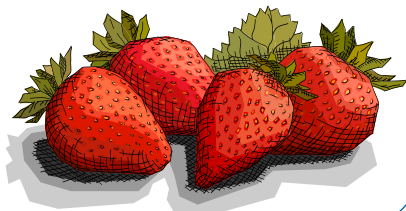
### DELAWARE-GEORGETOWN APARTMENTS 11:30AM-1PM

### DELAWARE-ST. MICHAEL'S COMMUNITY 11:30AM-1PM

### DELAWARE-CAFE 55 AT SOURCEPOINT 11AM-1:30PM

## 18 YEARS & YOUNGER

### DELAWARE-SUMMER LUNCH AT WOODWARD ELEMENTARY NOON-1PM



# FRIDAY

## Food Pantries

### BELLE AVENUE FOOD PANTRY

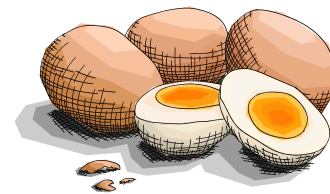
162 Belle Avenue, Delaware  
740-369-4943

**1-2PM**

### FAMILY RESOURCE CENTER- PACER PANTRY

74 W. William St., Delaware  
740-833-1619

**CURBSIDE PICKUP-CALL A FEW  
HOURS IN ADVANCE**



## FREE OR REDUCED Community Meals

### ANDREWS HOUSE

39 West Winter Street, Delaware  
740-369-4520  
**SECOND FRIDAY**  
**5:30-6:30PM**

### COME AND DINE PLEASANT HILL FREWILL BAPTIST CHURCH

230 Hayes Street, Delaware  
740-363-5295  
**THIRD FRIDAY**  
**4-6PM**

### COMMUNITY OPEN TABLE SUNBURY UNITED METHODIST CHURCH

100 West Cherry Street, Sunbury  
740-965-3813  
**FIRST FRIDAY**  
**5:30PM**

### LSS FOOD PANTRY

Place your order and schedule  
pick up online at  
lssfoodpantries.org or call the  
Help Desk at 1-877-LSS-MEAL.  
Questions, visit:  
www.lssnetworkofhope.org/  
foodpantries/

### PEOPLE IN NEED

138 Johnson Drive, Delaware  
740-363-6284  
**9AM-NOON • 1-3PM**

### THE SALVATION ARMY

340 Lake Street, Delaware  
740-369-5301  
**10AM-NOON**  
**1PM-3PM**

## 55+ MEALS -

SourcePoint congregate  
dining areas are  
**CURRENTLY CLOSED.**  
Please call 740-203-2432 for  
additional information.

### ASHLEY-WHITE LILY CHAPEL 11:30AM-1PM

### DELAWARE-GEORGETOWN APARTMENTS 11:30AM-1PM

### DELAWARE-ST. MICHAEL'S COMMUNITY 11:30AM-1PM

### DELAWARE-CAFE 55 AT SOURCEPOINT 11AM-1:30PM

### SUNBURY-RAINBOW APARTMENTS 11AM-12:30PM

## 18 YEARS & YOUNGER

### DELAWARE-SUMMER LUNCH AT WOODWARD ELEMENTARY NOON-1PM

# SATURDAY

## Food Pantries

### BIG WALNUT FRIENDS WHO SHARE

216 High Street, Sunbury  
740-965-9596

Services for senior citizens of  
Big Walnut School District,  
bring proof of residency  
**SECOND SATURDAY**

**10AM-NOON**

### FARMERS MARKET SNAP/PRODUCE PERKS

Sandusky Street,  
Downtown Delaware  
740-369-4520  
**MAY-OCTOBER**  
**9AM-NOON**

### LSS FOOD PANTRY

Place your order and schedule  
pick up online at  
lssfoodpantries.org or call the  
Help Desk at 1-877-LSS-MEAL.  
Questions, visit:  
www.lssnetworkofhope.org/  
foodpantries/

### M.A.S.H. PANTRY FOR VETERANS

222 East William Street,  
Delaware  
614-522-1555  
**10AM-NOON**

## FREE OR REDUCED Community Meals

### COMMON GROUND FREE STORE

193 East Central Avenue,  
Delaware  
740-369-3733  
**10AM-1PM**

### A TABLE PREPARED ZION AME CHURCH

140 South Washington Street,  
Delaware  
740-363-1810  
**FOURTH SATURDAY**  
**4-6PM**

## PARTNERS



## DELAWARE COUNTY HUNGER ALLIANCE

## Food Pantries

&

## FREE OR REDUCED Community Meals

## LOCATIONS & TIMES



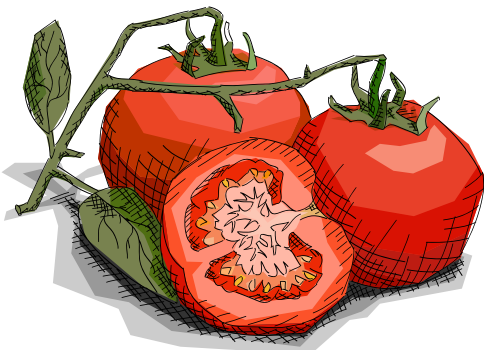
**DelawareCountyHunger.org**

See web page for latest version. Times and locations are subject to change.  
Revised 09/23/2020

# HISTORY

Created in 2012 by the United Way of Delaware County and Delaware General Health District, the Delaware County Hunger Alliance mission is "Fighting to End Hunger." The Alliance is a cross-sector collaboration of community partners committed to connecting our neighbors in need with services that provide access to healthy food options, nutrition education, and resources that promote economic stability.

In 2015, 10 pantries served 11,963 un-duplicated individuals through the Mid-Ohio Foodbank network in Delaware County. According to Feeding America, in 2016, there were 15,890 individuals in Delaware County who were faced with food insecurity on a regular basis. Through the Delaware County Hunger Alliance, our partners use best practices, data and creativity to increase hunger-related services, outreach and opportunity throughout Delaware County.



## MONDAY

### Food Pantries

**DELAWARE MOBILE MARKET**  
795 Pollock Road, Delaware  
740-369-4520  
Income guidelines, brief registration, curbside  
**FIRST & THIRD MONDAYS**  
**10AM-11:30AM**

**DELAWARE CITY VINEYARD-FEED DELAWARE**  
32 Troy Road, Delaware  
740-362-6383  
**SECOND & FOURTH MONDAYS**  
**6-8PM**

**FAMILY RESOURCE CENTER-PACER PANTRY**  
74 W. William St., Delaware  
740-833-1619  
**CURBSIDE PICKUP-CALL A FEW HOURS IN ADVANCE**

**PEOPLE IN NEED**  
138 Johnson Drive, Delaware  
740-363-6284  
**9AM-NOON • 1-4:30PM**

### FREE OR REDUCED Community Meals

**ANDREWS HOUSE**  
39 West Winter Street,  
Delaware  
740-369-4520  
**THIRD MONDAY**  
**5:30-6:30PM**

**COMMON GROUND FREE STORE**  
193 East Central Avenue,  
Delaware  
740-369-3733  
**6-8:30PM**

**FEED DELAWARE**  
32 Troy Road, Delaware  
740-362-6383  
**SECOND & FOURTH MONDAYS**  
**6-8PM**

**VINEYARD CHURCH OF DELAWARE COUNTY**  
1001 West Cherry Street,  
Sunbury  
740-965-8888  
**FIRST & THIRD MONDAYS**  
**4-7:30PM**



**THE SALVATION ARMY**  
340 Lake Street, Delaware  
740-369-5301  
**10AM-NOON**  
**1PM-3PM**

**VINEYARD CHURCH OF DELAWARE COUNTY**  
1001 West Cherry Street,  
Sunbury  
740-965-8888  
**FIRST & THIRD MONDAYS**  
**DOORS OPEN AT 4PM**  
**5-7:30PM**

**LSS FOOD PANTRY**  
Place your order and schedule pick up online at [lssfoodpantries.org](http://lssfoodpantries.org) or call the Help Desk at 1-877-LSS-MEAL. Questions, visit: [www.lssnetworkofhope.org/foodpantries/](http://www.lssnetworkofhope.org/foodpantries/)

### 55+ MEALS -

SourcePoint congregate dining areas are **CURRENTLY CLOSED**. Please call 740-203-2432 for additional information.

**DELAWARE-GEORGETOWN APARTMENTS** **11:30AM-1PM**

**DELAWARE-ST. MICHAEL'S COMMUNITY** **11:30AM-1PM**

**DELAWARE-CAFE 55 AT SOURCEPOINT** **11AM-1:30PM**

**SUNBURY-RAINBOW APARTMENTS** **11AM-12:30PM**

### 18 YEARS & YOUNGER

**DELAWARE-SUMMER LUNCH AT WOODWARD ELEMENTARY**  
**NOON-1PM**

## TUESDAY

### Food Pantries

**BELLE AVENUE FOOD PANTRY**  
162 Belle Avenue, Delaware  
740-369-4943  
**1-2PM**

**BIG WALNUT FRIENDS WHO SHARE**  
216 High Street, Sunbury  
740-965-9596  
Income below 200% of poverty level, bring proof of residency  
**SECOND & FOURTH TUESDAYS**  
**6:30-8PM**

**BUCKEYE VALLEY FOOD PANTRY**  
101 East High Street, Ashley  
614-507-0426  
Serving Buckeye Valley residents, bring bags  
**10AM-NOON**

**EASTSIDE MISSION FOOD PANTRY**  
32 Joy Avenue, Delaware  
740-816-8826  
**SECOND & FOURTH TUESDAYS**  
**5:30-7PM**

**FAMILY RESOURCE CENTER-PACER PANTRY**  
74 W. William St., Delaware  
740-833-1619  
**CURBSIDE PICKUP-CALL A FEW HOURS IN ADVANCE**

### FREE OR REDUCED Community Meals

**COMMON GROUND FREE STORE**  
193 East Central Avenue,  
Delaware  
740-369-3733  
**6-8:30PM**

**OUTREACH CHRISTIAN CENTER**  
77 London Road, Bldg B,  
Delaware  
**FOURTH TUESDAY**  
**5-7PM**



**KILBOURNE UMC FOOD PANTRY**  
5591 State Route 521, Kilbourne  
740-524-6041  
**10AM-4PM EXCEPT ELECTION DAYS**

**LSS FOOD PANTRY**  
Place your order and schedule pick up online at [lssfoodpantries.org](http://lssfoodpantries.org) or call the Help Desk at 1-877-LSS-MEAL. Questions, visit: [www.lssnetworkofhope.org/foodpantries/](http://www.lssnetworkofhope.org/foodpantries/)

**M.A.S.H. PANTRY FOR VETERANS**  
222 East William Street,  
Delaware  
614-522-1555  
**10AM-NOON**

**OPEN TABLE FOOD PANTRY**  
2393 Peachblow Road, Lewis Center  
740-548-7718  
Serving Lewis Center, Powell, Polaris  
**SECOND TUESDAY**  
**7-8:30PM**

**THE SALVATION ARMY**  
340 Lake Street, Delaware  
740-369-5301  
Call if outside of times below  
**9:30AM-3PM**

### 55+ MEALS -

SourcePoint congregate dining areas are **CURRENTLY CLOSED**. Please call 740-203-2432 for additional information.

**DELAWARE-GEORGETOWN APARTMENTS** **11:30AM-1PM**

**DELAWARE-ST. MICHAEL'S COMMUNITY** **11:30AM-1PM**

**DELAWARE-CAFE 55 AT SOURCEPOINT** **11AM-1:30PM**

### 18 YEARS & YOUNGER

**DELAWARE-SUMMER LUNCH AT WOODWARD ELEMENTARY**  
**NOON-1PM**

## WEDNESDAY

### Food Pantries

**LSS FOOD PANTRY**  
Place your order and schedule pick up online at [lssfoodpantries.org](http://lssfoodpantries.org) or call the Help Desk at 1-877-LSS-MEAL. Questions, visit: [www.lssnetworkofhope.org/foodpantries/](http://www.lssnetworkofhope.org/foodpantries/)

**BIG WALNUT FRIENDS WHO SHARE**  
216 High Street, Sunbury  
740-965-9596  
Income below 200% of poverty level, bring proof of residency  
**9-11:30AM**

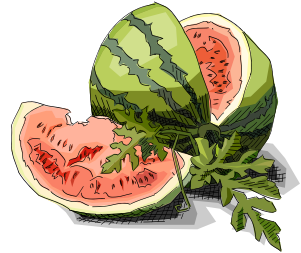
**FAMILY RESOURCE CENTER-PACER PANTRY**  
74 W. William St., Delaware  
740-833-1619  
**CURBSIDE PICKUP-CALL A FEW HOURS IN ADVANCE**

**FARMERS MARKET SNAP/PRODUCE PERKS**  
Sandusky Street,  
Downtown Delaware  
740-369-4520  
**MAY-OCTOBER**  
**3-6PM**

**HIGHPOINT COMMUNITY OUTREACH**  
795 Pollock Road, Delaware  
740-363-1754  
**THIRD WEDNESDAY**  
**5-6:45PM**

**PEOPLE IN NEED**  
138 Johnson Drive, Delaware  
740-363-6284  
**9AM-NOON • 1-4:30PM**

**THE SALVATION ARMY**  
340 Lake Street, Delaware  
740-369-5301  
Call if outside of times below  
**10:30AM-5:30PM**



### FREE OR REDUCED Community Meals

**WILLIAM STREET UNITED METHODIST CHURCH**  
28 West William Street,  
Delaware  
740-363-4741  
**FIRST WEDNESDAY**  
**5-6:30PM**

**COMMON GROUND FREE STORE**  
193 East Central Avenue,  
Delaware  
740-369-3733  
**10AM-1PM**

**HIGHPOINT COMMUNITY OUTREACH**  
795 Pollock Road, Delaware  
740-363-1754  
**THIRD WEDNESDAY**  
**5-7PM**

**55+ MEALS -**  
SourcePoint congregate dining areas are **CURRENTLY CLOSED**. Please call 740-203-2432 for additional information.  
**DELAWARE-GEORGETOWN APARTMENTS** **11:30AM-1PM**

**DELAWARE-ST. MICHAEL'S COMMUNITY** **11:30AM-1PM**

**DELAWARE-CAFE 55 AT SOURCEPOINT** **11AM-1:30PM**

**SUNBURY-RAINBOW APARTMENTS** **11AM-12:30PM**

### 18 YEARS & YOUNGER

**DELAWARE-SUMMER LUNCH AT WOODWARD ELEMENTARY**  
**NOON-1PM**